

ALL OF ME

GERALD MARKS

C

CMA7 E7

1

A7 DMIN7

5

E7 AMIN7

9

D7 DMIN7 G7

13

CMA7 E7

17

A7 DMIN7

21

FMA7 FMIN7 EMIN7 A7

25

DMIN7 G7 CMA7

29

BLUE SKIES

IRVING BERLIN

C

A MIN A MIN/G# A MIN/G A MIN/F#

Measures 1-4 of the bass line. Measure 1: A MIN chord, quarter note A. Measure 2: A MIN/G# chord, quarter rest. Measure 3: A MIN/G chord, quarter notes G, A, B. Measure 4: A MIN/F# chord, quarter note A, followed by a triplet of G, A, B.

C MA7 A7 D MIN7 G7 C MA7b6 B M7(b5) E 7b9 C MA7b6

Measures 5-8 of the bass line. Measure 5: C MA7 chord, quarter note A. Measure 6: A7 chord, quarter rest. Measure 7: D MIN7 chord, quarter note D, followed by a slur over G and A. Measure 8: G7 chord, quarter note G, followed by a slur over A and B. Measure 9: C MA7b6 chord, quarter note C, followed by a slur over D and E. Measure 10: B M7(b5) chord, quarter note B, followed by a slur over C and D. Measure 11: E 7b9 chord, quarter note E, followed by a slur over F and G. Measure 12: C MA7b6 chord, quarter note C, followed by a slur over D and E.

C MA7 G 7sus4 C MA7b6 F M6 C MA7b6 G7

Measures 11-14 of the bass line. Measure 11: C MA7 chord, quarter notes A, B, C, D, E. Measure 12: G 7sus4 chord, quarter notes G, A, B, C, D. Measure 13: C MA7b6 chord, quarter notes C, D, E, F, G. Measure 14: F M6 chord, quarter notes F, G, A, B, C. Measure 15: C MA7b6 chord, quarter notes C, D, E, F, G. Measure 16: G7 chord, quarter notes G, A, B, C, D.

C MA7 G 7sus4 C MA7b6 B M7(b5) E 7(b9)

Measures 15-18 of the bass line. Measure 15: C MA7 chord, quarter notes A, B, C, D, E. Measure 16: G 7sus4 chord, quarter notes G, A, B, C, D. Measure 17: C MA7b6 chord, quarter notes C, D, E, F, G. Measure 18: B M7(b5) chord, quarter notes B, C, D, E, F, followed by a slur over G and A. Measure 19: E 7(b9) chord, quarter note E, followed by a slur over F and G.

A MIN A MIN/G# A MIN/G A MIN/F#

Measures 19-22 of the bass line. Measure 19: A MIN chord, quarter note A. Measure 20: A MIN/G# chord, quarter rest. Measure 21: A MIN/G chord, quarter notes G, A, B. Measure 22: A MIN/F# chord, quarter note A, followed by a triplet of G, A, B.

C MA7 A 7(b9) D MIN7 G7 C MA7b6 B M7(b5) E 7(b9)

Measures 23-26 of the bass line. Measure 23: C MA7 chord, quarter note A. Measure 24: A 7(b9) chord, quarter rest. Measure 25: D MIN7 chord, quarter note D, followed by a slur over G and A. Measure 26: G7 chord, quarter note G, followed by a slur over A and B. Measure 27: C MA7b6 chord, quarter note C, followed by a slur over D and E. Measure 28: B M7(b5) chord, quarter note B, followed by a slur over C and D. Measure 29: E 7(b9) chord, quarter note E, followed by a slur over F and G.

BASS CLEF

JODY GRIND

HORACE SILVER

B^bMIN⁷

E^b7 **B^bMIN⁷**

A⁷(#11) **B⁷(#11)** **B^bMIN⁷**

6 3

10

KILLER JOE

BENNY GOLSON

C

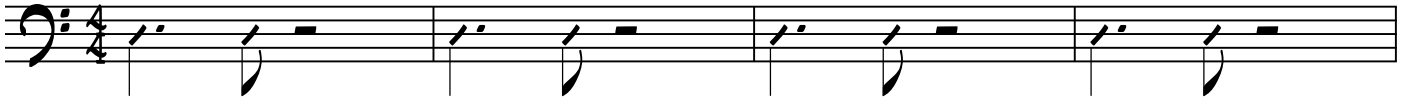
RHYTHM VAMP:

C13

Bb13

C13

Bb13



C7

Bb7

C7

Bb7

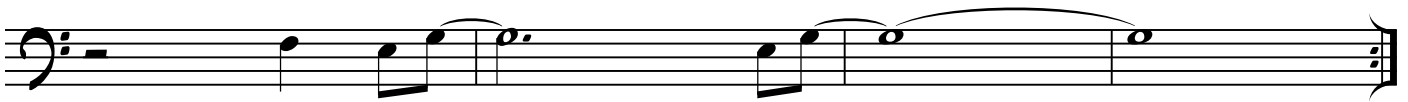


C7

Bb7

C7

Bb7



EM7(b9)

A7(b9)

EbMIN7

Ab7

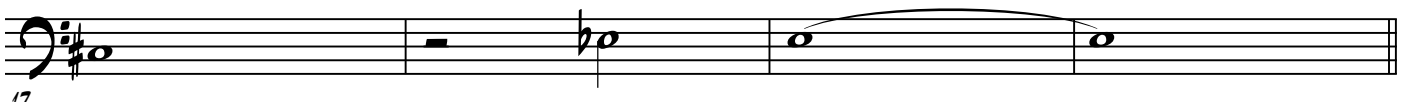


A7

Ab7

E MIN7

A7



C7

Bb7

C7

Bb7

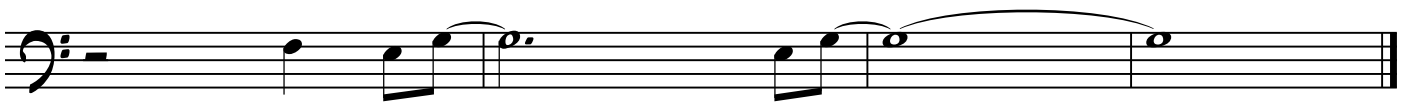


C7

Bb7

C7

Bb7



RECORDAME

C

JOE HENDERSON

Amin

6

10

14

Chord symbols: Amin, Cmin, Cmin7, F7, Bbmaj7, Bbmi7, Eb7, Abmaj7, Abmi7, Db7, Gbmaj7, Gmi7, C7, Fmaj7, E7(#9), E7(#9)

SANOU

CLIFFORD BROWN

C

The musical score for 'Sanou' by Clifford Brown is written in bass clef, 4/4 time, and B-flat major. It consists of three staves of music. The first staff begins with a common time signature 'C' and contains measures 1 through 4. The second staff contains measures 5 through 8, with a measure number '5' at the beginning. The third staff contains measures 9 through 12, with a measure number '9' at the beginning. The score includes various chords such as Eb7, Ab7, Eb6, Gmi7, C7, Fmi7, and Bb7. It also features several triplet markings over groups of notes.

SWEET GEORGIA BROWN

C

PINKARD, CASEY & BERNIE

07 07

1 2

G7 G7

5

C7 C7

9

F7 C7(#5) F7 EMIN7 A7

13

D7 D7

17

G7 G7

21

DMIN7 A7 DMIN7 A7

25

F7 E7 Eb7 D7 G7 C7 F7

29

TUNE UP

C

MILES DAVIS

Handwritten musical score for 'Tune Up' by Miles Davis. The score is written in bass clef, one sharp (F#), and 4/4 time. It consists of five staves of music with various chord annotations above the notes.

Staff 1: E MIN7, A7, D MA7

Staff 2: D MIN7, G7, C MA7

Staff 3: C MIN7, F7, B MA7, G MIN7

Staff 4: E MIN7, F7, B MA7, A7

Staff 5: E MIN7, A7, D MA7