

ALL OF ME

GERALD MARKS

C

CMA7 E7

1

A7 DMIN7

5

E7 AMIN7

9

D7 DMIN7 G7

13

CMA7 E7

17

A7 DMIN7

21

FMA7 FMIN7 EMIN7 A7

25

DMIN7 G7 CMA7

29

JIVE SAMBA

NAT ADDERLEY

C

Musical notation for the first staff, starting with a common time signature (C) and a key signature of one flat (Bb). The staff contains a bass clef and a 4/4 time signature. The melody begins with a half note Bb, followed by a quarter note Gb, and then a half note F. The next measure contains a half note E, a quarter note D, and a half note C. The final measure contains a half note Bb, a quarter note A, and a half note G. A chord symbol **F7(#9)** is written above the first measure.

Musical notation for the second staff, starting with a common time signature (C) and a key signature of one flat (Bb). The staff contains a bass clef and a 4/4 time signature. The melody begins with a half note Bb, followed by a quarter note Gb, and then a half note F. The next measure contains a half note E, a quarter note D, and a half note C. The final measure contains a half note Bb, a quarter note A, and a half note G. A chord symbol **F7(#9)** is written above the first measure. The staff ends with a double bar line and a repeat sign. The first ending is marked with a box containing the number 1, and the second ending is marked with a box containing the number 2.

Musical notation for the third staff, starting with a common time signature (C) and a key signature of one flat (Bb). The staff contains a bass clef and a 4/4 time signature. The melody begins with a half note Bb, followed by a quarter note Gb, and then a half note F. The next measure contains a half note E, a quarter note D, and a half note C. The final measure contains a half note Bb, a quarter note A, and a half note G. A chord symbol **Bb7** is written above the first measure, and a chord symbol **F7(#9)** is written above the second measure.

Musical notation for the fourth staff, starting with a common time signature (C) and a key signature of one flat (Bb). The staff contains a bass clef and a 4/4 time signature. The melody begins with a half note Bb, followed by a quarter note Gb, and then a half note F. The next measure contains a half note E, a quarter note D, and a half note C. The final measure contains a half note Bb, a quarter note A, and a half note G. A chord symbol **F7(#9)** is written above the first measure.

BASS CLEF

JODY GRIND

HORACE SILVER

B^bMIN⁷

E^b7 **B^bMIN⁷**

A⁷(#11) **B⁷(#11)** **B^bMIN⁷**

6 3

10

KILLER JOE

BENNY GOLSON

C

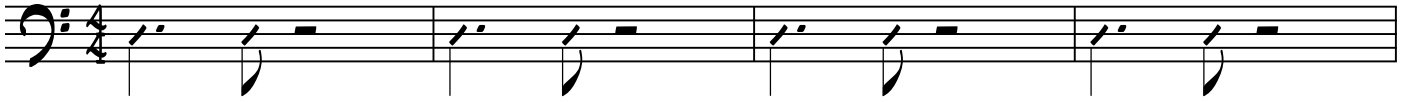
RHYTHM VAMP:

C13

Bb13

C13

Bb13



C7

Bb7

C7

Bb7

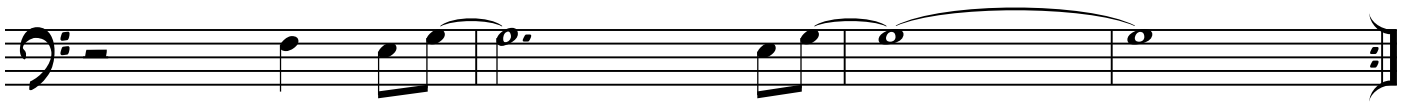


C7

Bb7

C7

Bb7



EM7(b9)

A7(b9)

EbMIN7

Ab7

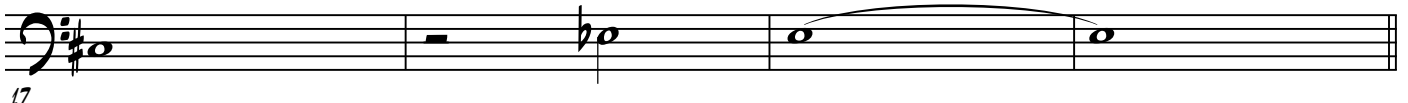


A7

Ab7

E MIN7

A7



C7

Bb7

C7

Bb7

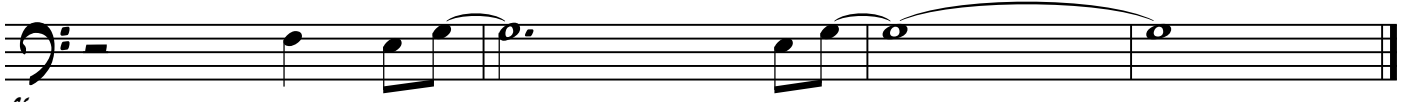


C7

Bb7

C7

Bb7



25

RECORDAME

C

JOE HENDERSON

Amin

6

10

14

Bb_{MA7} Bb_{mi7} $Eb7$ A_{bMA7} A_{bmi7} D_{b7}

G_{bMA7} G_{mi7} $C7$ F_{MA7} $E7(\#9)$ $E7(\#9)$

SANOU

CLIFFORD BROWN

C

The musical score for 'Sanou' by Clifford Brown is written in bass clef, 4/4 time, and B-flat major. It consists of three staves of music. The first staff begins with a common time signature 'C' and contains measures 1 through 4. The second staff contains measures 5 through 8, with a measure number '5' at the beginning. The third staff contains measures 9 through 12, with a measure number '9' at the beginning. The score includes various chords such as Eb7, Ab7, Eb6, Gmi7, C7, Fmi7, and Bb7. Triplet markings are present over several notes in measures 1, 2, 5, 6, 8, and 12.

SWEET GEORGIA BROWN

C

PINKARD, CASEY & BERNIE

07 07

1 2 3 4

5 6 7 8

5 6 7 8

9 10 11 12

9 10 11 12

13 14 15 16

13 14 15 16

17 18 19 20

17 18 19 20

21 22 23 24

21 22 23 24

25 26 27 28

25 26 27 28

29 30 31 32

29 30 31 32

TUNE UP

C

MILES DAVIS

PNO. INTRO:

E_{mi}7

A7

D_{MA}7

5

D_{mi}7

G7

C_{MA}7

9

C_{mi}7

F7

B_b_{MA}7

G_{mi}7

13

E_{mi}7

F7

B_b_{MA}7

A7

17

E_{mi}7

A7

D_{MA}7

21